

Quality of Life Indicators for Groups at Risk of Exclusion

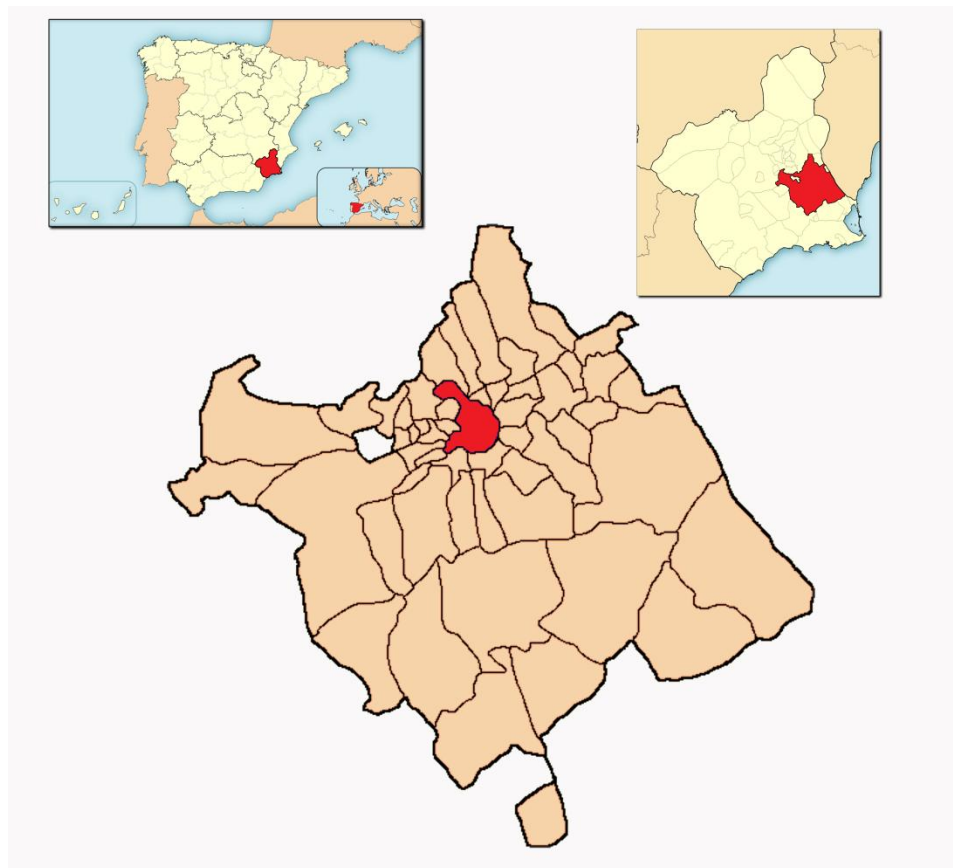
European Programme Service
Town Council of Murcia

Poznań, 22-23.10.2014

SOCIAL CONSULTATION



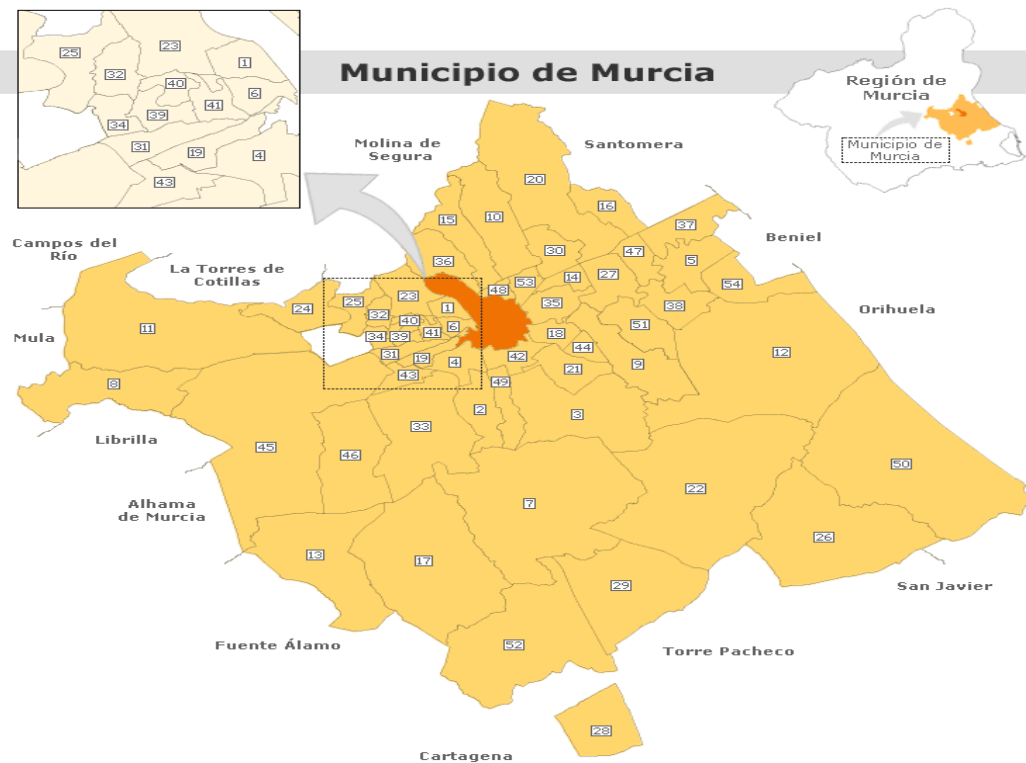
Personal Consultation in the District of Espiritu Santo, Espinardo



MURCIA: A unique municipality

- **DISTRICT OF ESPIRITU SANTO:**
 - ◆ ONE OF THE 27 DISTRICTS OF THE CITY OF MURCIA
 - ◆ HIGH CONCENTRATION OF SOCIAL PROBLEMS
 - ◆ GREATER DEGREE OF SOCIAL EXCLUSION IN THE MUNICIPALITY

DISTRICT OF ESPIRITU SANTO



STRATEGIC LINE 5: CITIZEN PARTICIPATION



ESPIRITU SANTO URBAN INITIATIVE

- **ERDF Operational Programme**
- Objective: the economic and social invigoration of the district
- Integrated approach: physical, social and economic dimension
- Culture as the key driver
- Participatory process: diagnostic, the formulation of proposals and the management and assessment of actions

Survey design

- Exhaustive study of quality of life indicators
- Purpose: Information on the social and economic situation
- Survey: structured into 7 blocks
- The identification of problems, social capital, opinion of the district

The analysis of quality of life indicators

Quality of life concepts

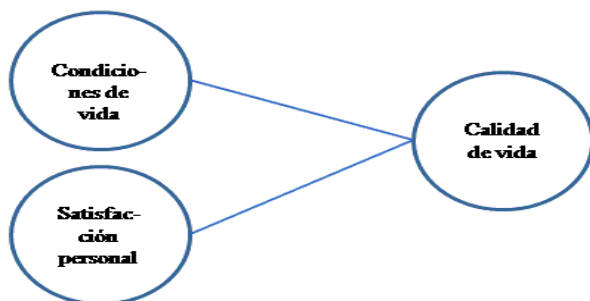
a) Calidad de vida en términos de *condiciones de vida*:



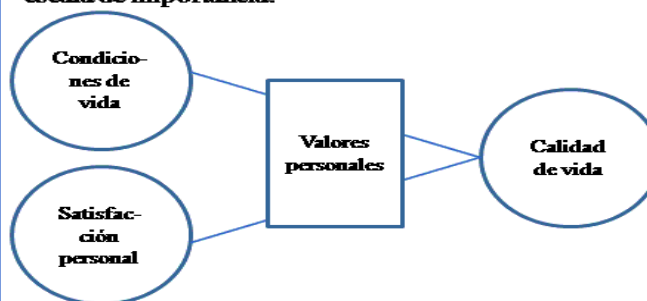
b) Calidad de vida como *satisfacción* con la vida:



c) Calidad de vida definida como combinación de las *condiciones de vida* y *satisfacción*:



d) Calidad de vida definida como combinación de las *condiciones de vida* y la *satisfacción* en función de una escala de importancia:



QUALITY OF LIFE BAROMETER FOR SPANISH MUNICIPALITIES

1. Demographics	4. Civic Participation	7. Travel and Transport
1.1 Population 1.2 Nationality 1.3 Household Structure	4.1 Citizen Participation 4.2 Local Administration	7.1 Passenger Transport
2. Social Aspects	5. Training and the Provision of Training	8. Information Society
2.1 Housing 2.2 Healthcare 2.3 Security	5.1 Education and Training 5.2 Education Level	8.1 Users and Infrastructures 8.2 Local Government Information Systems 8.3 Telecommunications
3. Economic Aspects	6. Environment	9. Culture and Leisure
3.1 Job Market 3.2 Economic Activity 3.3. Income and Poverty	6.1 Climate 6.2 Air Quality and Noise Level 6.3 Water 6.4 Solid Waste Treatment	9.1 Leisure and Culture 9.2 Tourism

Indicators of vulnerability

Town planning analysis reports for vulnerable districts in Spain

Indicators of vulnerable census sections	<ul style="list-style-type: none"> -Unemployment rate -% illiterate population -% people living in homes without toilets
Indicators of the degree of vulnerability	<ul style="list-style-type: none"> -% households with a single person > 64 years -The foreign child population index -% single-parent households
Socio-economic vulnerability	<ul style="list-style-type: none"> -The unemployment rate -The percentage of temporary workers -The percentage of unqualified workers
Residential vulnerability	<ul style="list-style-type: none"> -% houses useful surface area < 31 m² -Average housing surface area per inhabitant -% houses built before 1951
Subjective vulnerability	<ul style="list-style-type: none"> -Outside noise -Poor communications -Delinquency

Participatory consultation quality of life indicators

Comparison of municipal/regional/local statistical data

- ☐ Characteristics, evolution and spatial distribution of the population
- ☐ Education and training
- ☐ Job market: employment/unemployment and casualness
- ☐ Analysis of the distribution and location of economic activity
- ☐ Main social conflicts
- ☐ Gender and social inequalities

Participatory consultation quality of life indicators

1. Population

- Area residents (Municipal population register) - Population density

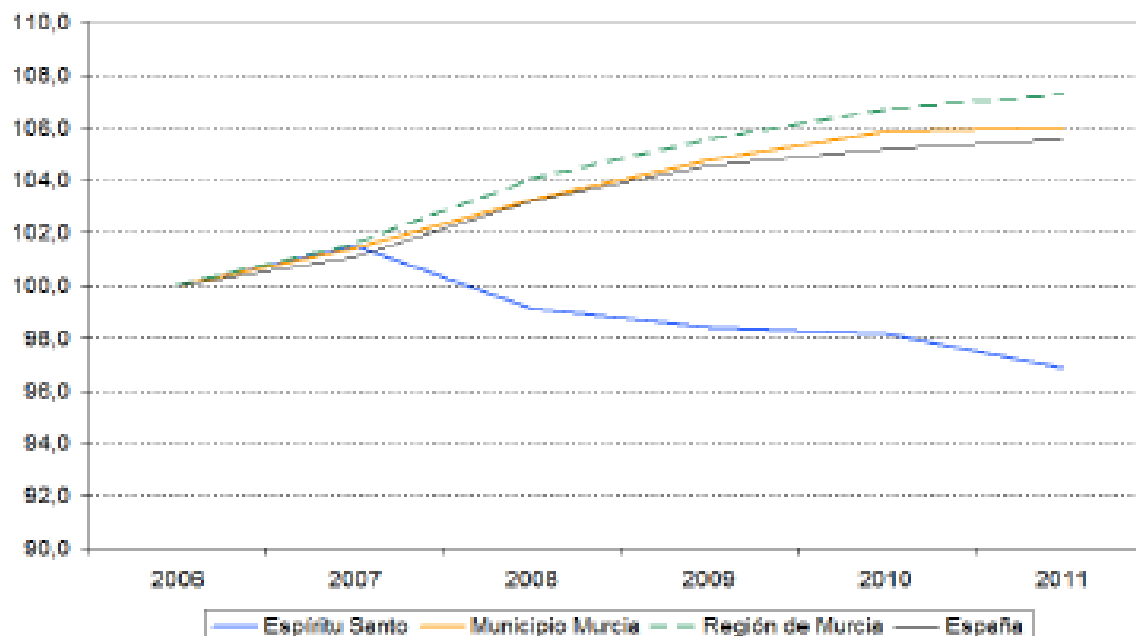
	España	R. Murcia	Murcia Municipio	Barrio Espíritu Santo
Superficie (Km2)	504.645	11.313	886	0,28
Población	47.190.493	1.470.069	442.203	4.007
Densidad de Población (hab/Km2)	93,5	129,9	499,1	14.311

Surface area, density and population. Spain, Region of Murcia, Municipality of Murcia and Espíritu Santo. 2011.

Participatory consultation quality of life indicators

1. Population

- Population evolution



Participatory consultation quality of life indicators

2. Households and families

- Household composition - No. families - Type

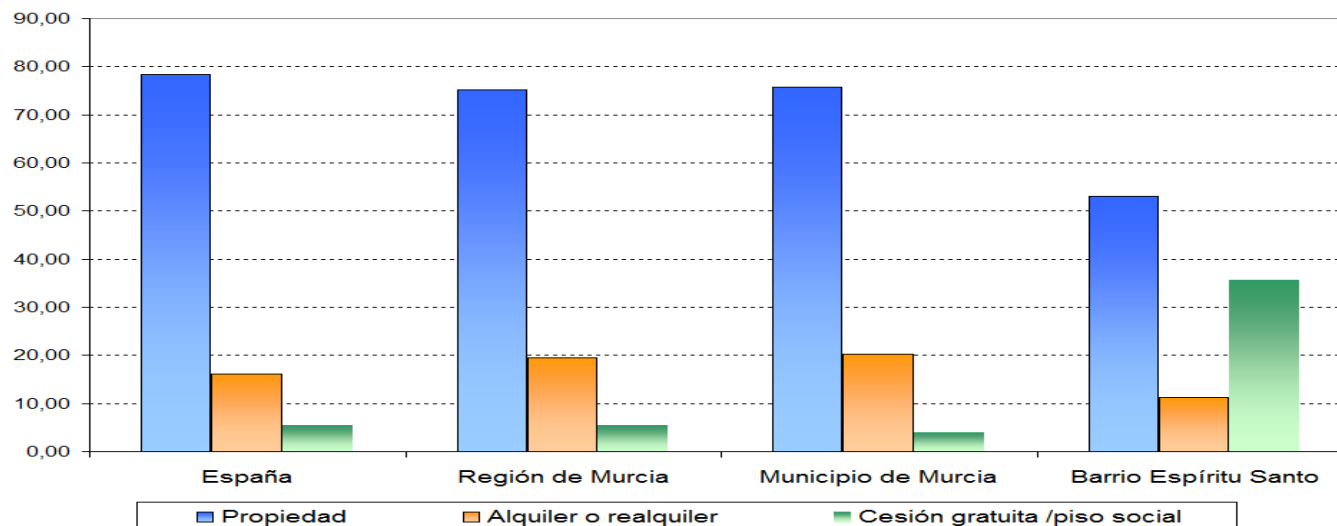
	Barrio Espiritu Santo (%)	Municipio de Murcia (%)	Región de Murcia (%)	España (%)	Barrio Espiritu Santo (Municipio Murcia = 100)
Hogares unipersonales	5,5	21,4	16	18,8	25,6
Hogares numerosos	26,2	6,9	9,2	6,1	379,7
Tasa de maternidad	13,1	11,7	11,9	10,4	108,2
	Barrio Espiritu Santo	Municipio de Murcia	Región de Murcia	España	Barrio Espiritu Santo (Municipio Murcia = 100)
Tamaño medio hogar	3,65	2,67	2,9	2,69	136,7

Year 2011 household indicators. Spain, Region of Murcia, Murcia and the District of Espiritu Santo.

Participatory consultation quality of life indicators

3. Housing

- Ownership regime - Housing characteristics - Ownership rate



Housing ownership regime. Spain, Region of Murcia, Murcia and the District of Espíritu Santo for 2011

Participatory consultation quality of life indicators

4. Education and Training

- Promotion rate - Suitability rate - Synthetic indicators

	Barrio Espíritu Santo (%)	Municipio de Murcia (%)	Región de Murcia (%)	España (%)	Barrio Espíritu Santo (Municipio Murcia = 100)
Tasa de población analfabeta o sin estudios	47,4	22,9	27,5	23,6	206,8
Tasa de población con titulación superior	3	19,4	12	17,9	15,5
Tasa de obtención de educación secundaria	19,8	46,6	35,7	45,3	42,5

2011 Education Indicators. Spain, Region of Murcia, Municipality of Murcia and the District of Espíritu Santo

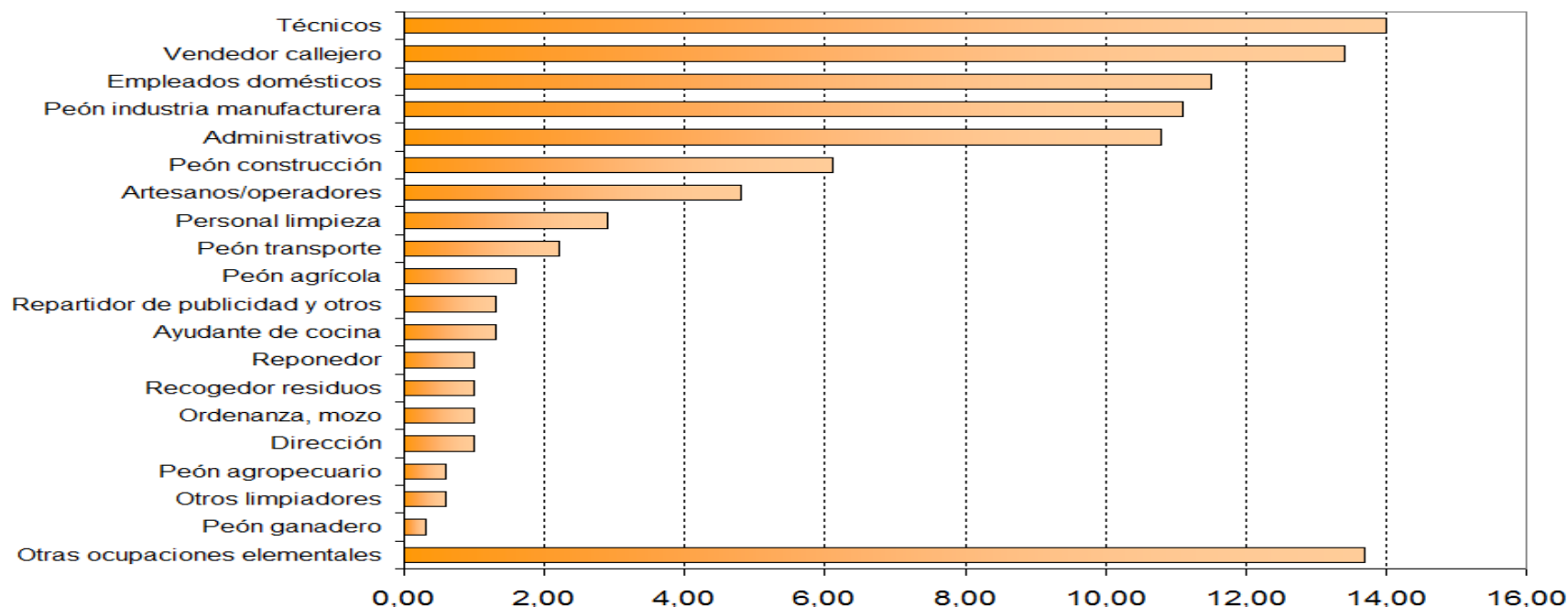
Participatory consultation quality of life indicators

5. Job market: employment/unemployment and casualness

Indicador	Barrio Espíritu Santo	Municipio Murcia	Región de Murcia	España	Barrio Espíritu Santo (Municipio Murcia = 100)
Tasa de actividad	64,7	61,8	61,5	60,9	104,7
Tasa de actividad masculina	58,7	71,4	72,8	69,1	82,2
Tasa de actividad femenina	70,6	52,3	50,1	53,1	135
Tasa de actividad juvenil (16-24)	70,3	39,2	43	41	179,3
Tasa de ocupación	33,8	50,3	46,5	47,5	67,2
Tasa ocupación masculina	35,4	57,4	55,2	54,4	61,7
Tasa ocupación femenina	32,3	43,3	37,7	40,9	74,6
Tasa de ocupación juvenil	48,3	21,7	26,3	23,7	222,6
Tasa de paro	48	18,6	24,4	22	258,1
Tasa de paro masculina	39,7	19,6	24,2	21,3	202,6
Tasa de paro femenina	54,7	17,2	24,8	22,9	318
Tasa de paro juvenil	31,3	44,8	38,8	42,2	70

Participatory consultation quality of life indicators

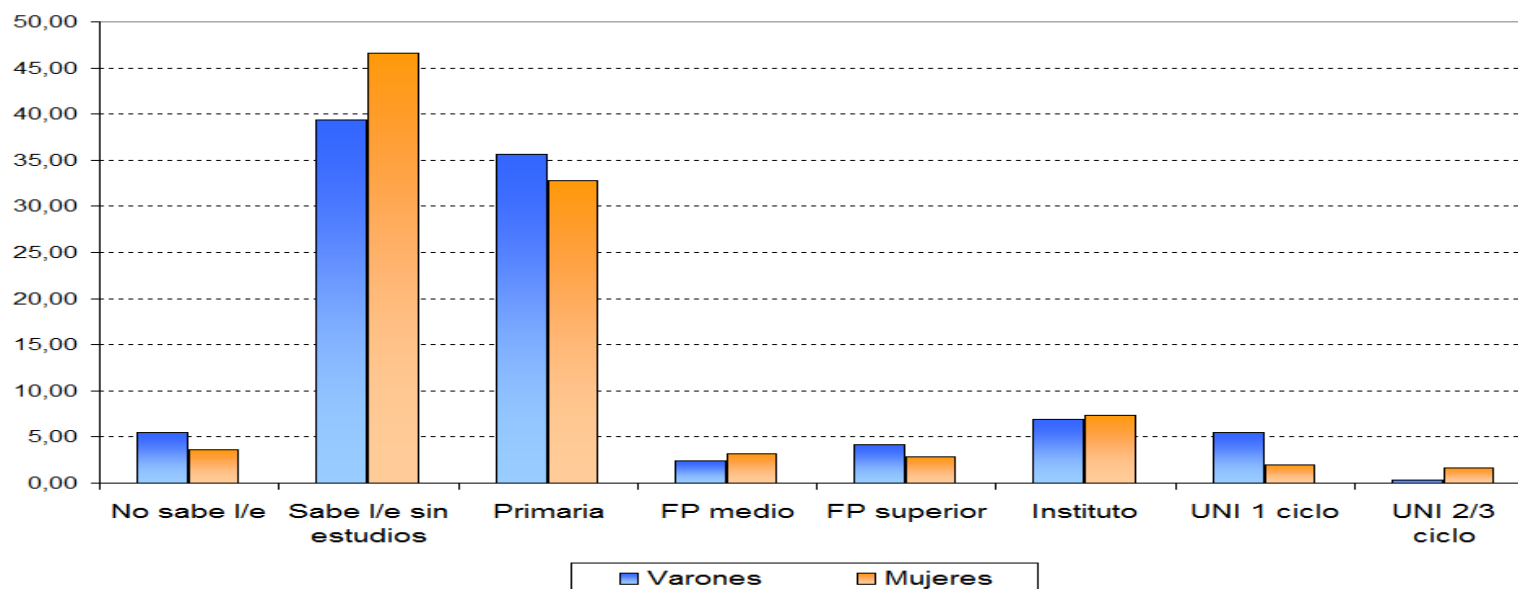
5. Job market: employment/unemployment and casualness



Population distribution as per current occupation. District of Espiritu Santo. Year 2011

Participatory consultation quality of life indicators

6. Gender discrimination

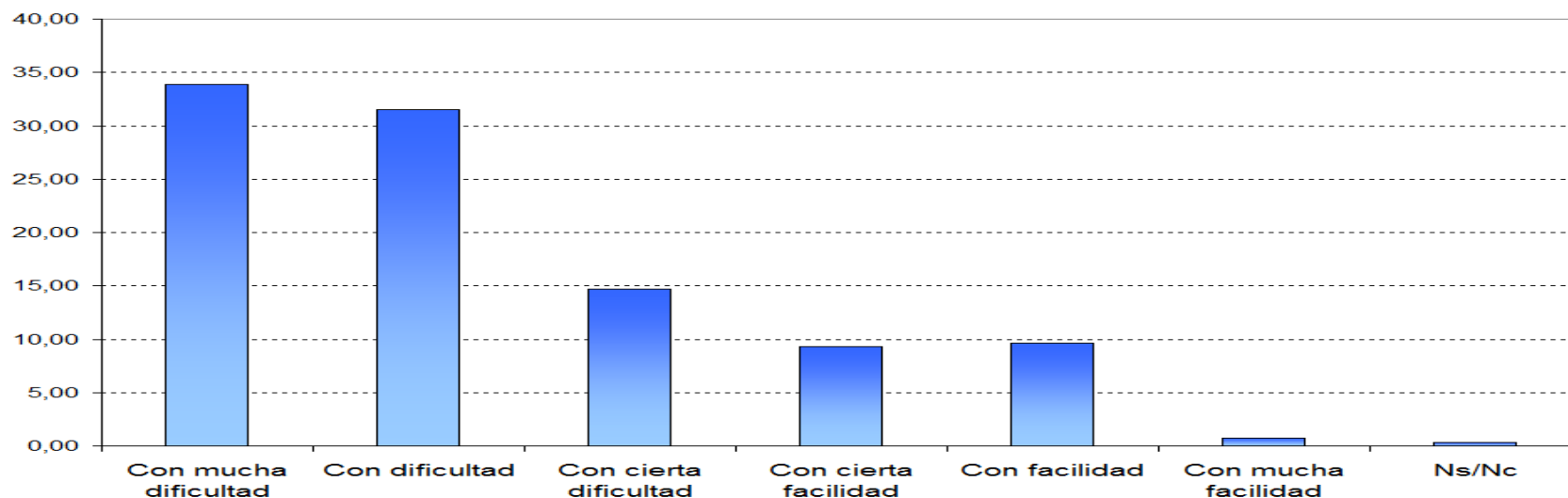


Education levels by sex. District of Espiritu Santo

Participatory consultation quality of life indicators

7. Overall living situation

Capacity to make ends meet

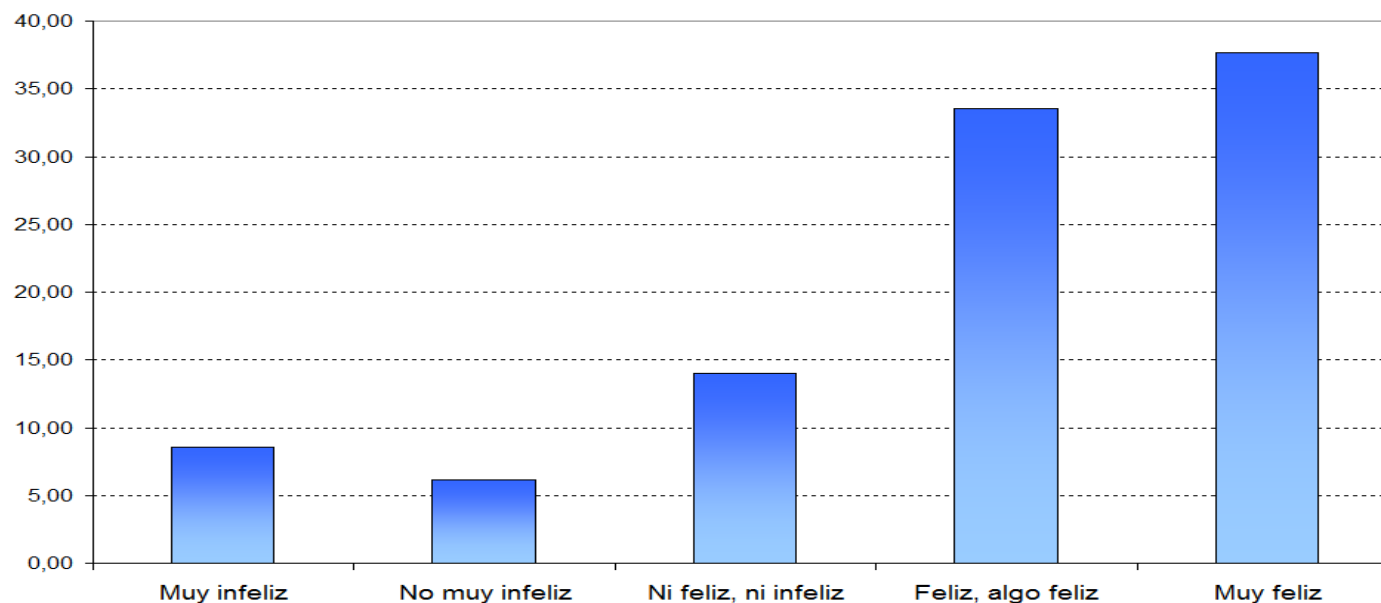


Capacity to make ends meet. District of Espiritu Santo. Year 2011

Participatory consultation quality of life indicators

7. Overall living situation

Happiness



Personal perception of one's conditions. District of Espiritu Santo. Year 2011

Participatory consultation quality of life indicators

Conclusions:

- Social/economic indicators + information on the social capital
- Social capital: collective action, empowerment, increased confidence
- Design interventions by means of participatory practices
- Fundamental: the role of network creators in the community

Thank You

Poznań, 22-23.10.2014



With the support of the Europe for Citizens Programme of the European Union