

# *Programme of the conversion of Klaipėda City central part*

*Indrė Butenienė*

*Klaipėda City Municipality  
Administration*

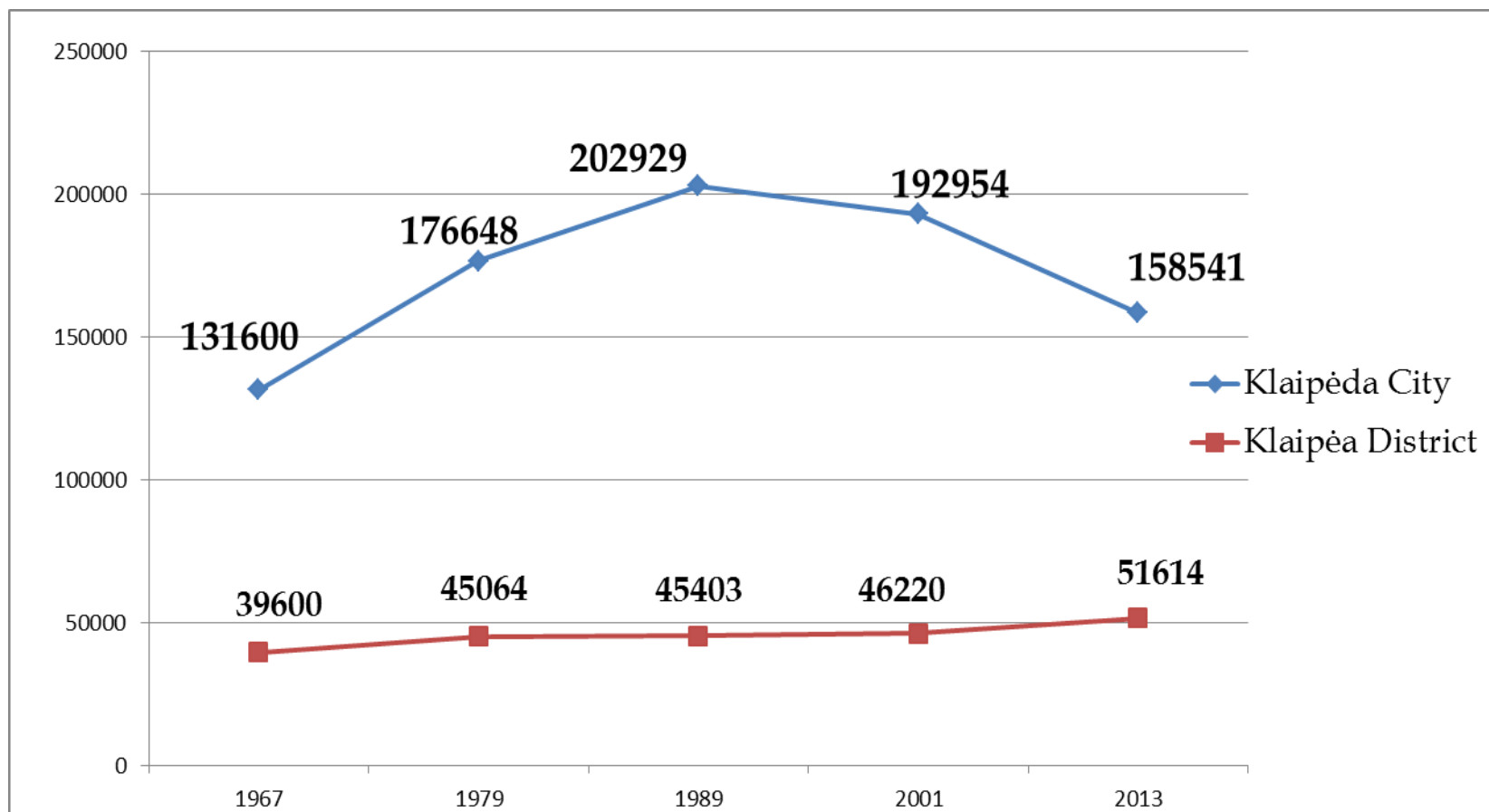
# Population of Klaipėda City

Year	1897	1938	1945	1959	1989	2001	2014
Population	20100	47189	3600	89500	202929	192954	157 305

# Reasons of loss of population:

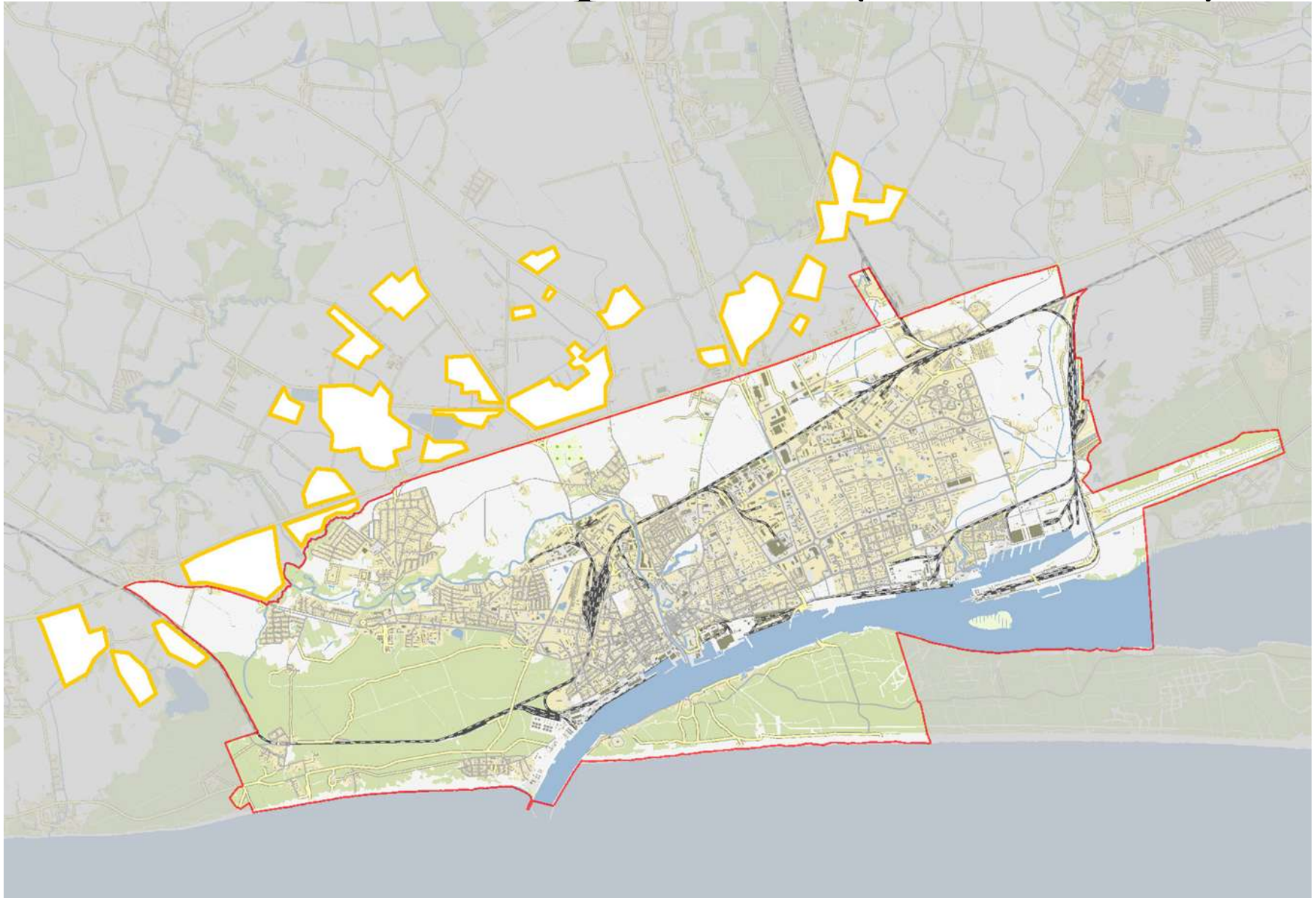
- High intensity of emigration to Western European countries with higher living standards;
- Low birth rate;
- Relatively high mortality;
- Internal migration to other cities and suburban areas.

# Demographical change in Klaipėda City and Klaipėda District Municipalities



- 14 % of population in Klaipėda City;
  - + 6 % of population in Klaipėda District;
- approximately 16,2 thousand inhabitants migrated from Klaipėda City to Klaipėda District.

# „The urban sprawl“ (2004-2014)



# Klaipėda City suburbanization process:

Part of the City	Inhabitants	Area*, ha	Density p/ha
Central	15281	207	74
Median	141540	1927	73
Periphery	19969	3061	6,5
Whole City	161200	2833	57
City+ Periphery	173620	5041	34

*\*Built-up area*

# Three faces of Klaipėda



- Old city;
- Sovietic city;
- New suburbs.



# Vision of Klaipėda in 2030

A sustainable and prosperous maritime city and the fastest developing cultural and economic center in Lithuania with a healthy, intelligent and responsible community

- Priorities of development till 2020:
  1. Healthy, bright and safe community;
  2. Sustainable urban development;
  3. Improving the competitiveness of the city.

# Adapting sustainable mobility principles in the city's transport system

- 85 km of bicycle routes;
- Priority to public transport, bicycles and electric vehicles;
- Environment friendly public transport;
- Park&Ride system.



# Installing saving energy and renewable energy supply systems

- Renovation of energetically inefficient public buildings;
- Using solid waste and waste water for generating energy



# Restoration of Klaipėda castle hill and adapting it to needs of culture and tourism

- Development of Klaipėda Castle museum;
- Small conference center inside the poterne of the castle;
- Reconstruction of the castle square.



# Creating conditions for the development of cultural and creative industries

## Creative business incubator „Culture factory“:

- Opening in 2015;
- 1077 m<sup>2</sup> office space for small businesses;
- Mentoring and management consultancy services provided.



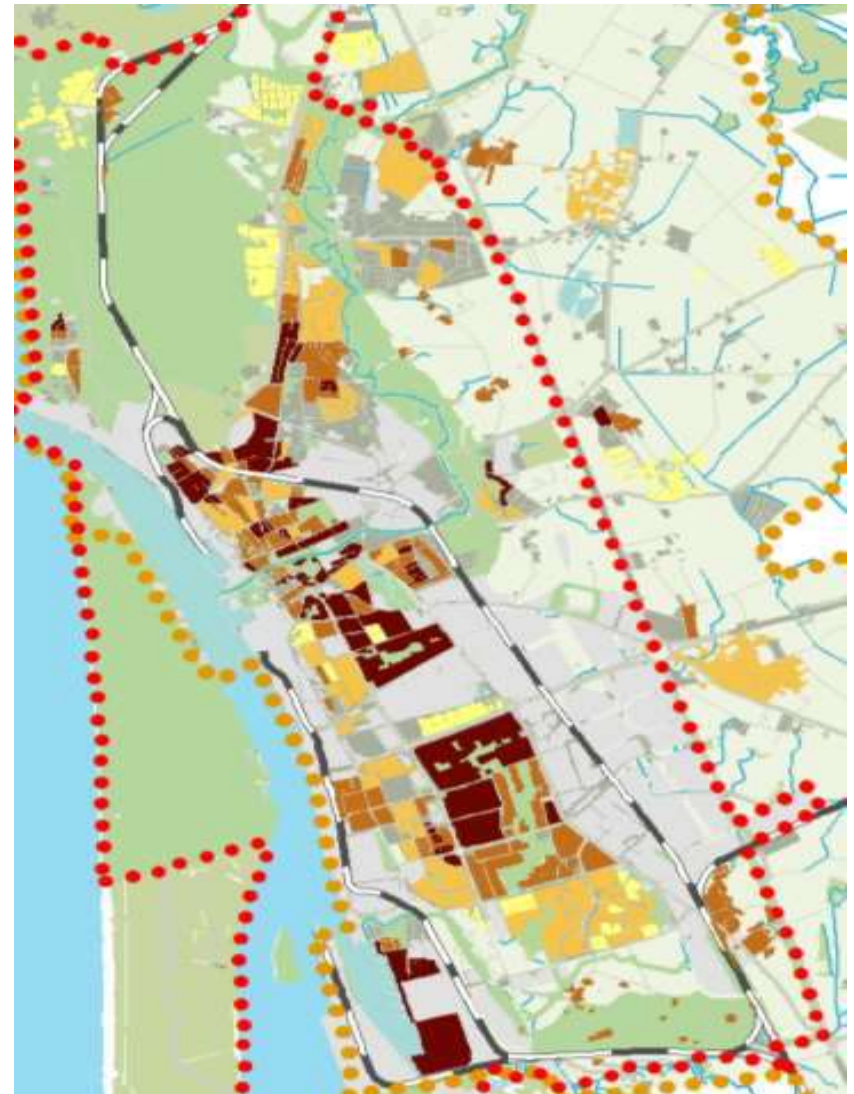
**Where would you  
prefer to live?**







## Percentage of elderly population in Klaipėda City and periphery



# „Target area“ in the central part of Klaipėda



# Plans for the „target area“

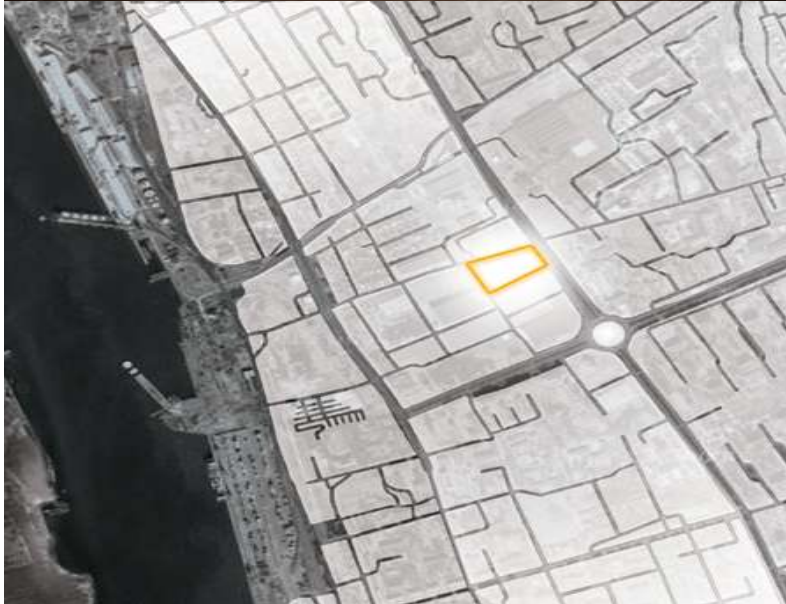
- bringing the new quality to the „target area“: rehabilitation of housing, reconstruction of yards and public spaces;
- reconstruction of buildings of municipal football school to the multifunction sports center;
- building a new multifunctional swimming pool meeting FINA standards;
- regeneration of Atgimimo and Vaidilos squares, parks and embankments of the Dane river to attractive public spaces;
- building a new bridge over the Dane river;
- historical restoration of the old urban structure of the Old Market area by restoring the network of streets and adapting the public space.

# Renovation of the old block-houses and yards

*25 thousand people in the „target area“ live in the old block houses, most of the houses are energetically inefficient. There is a lack of car parking spaces, yards look shabby, not accomodated for contemporary style of life, particularly for young families.*



# New swimming pool (50 meters, FINA standards )



# Reconstruction of buildings of municipal football school to the multifunction sports center



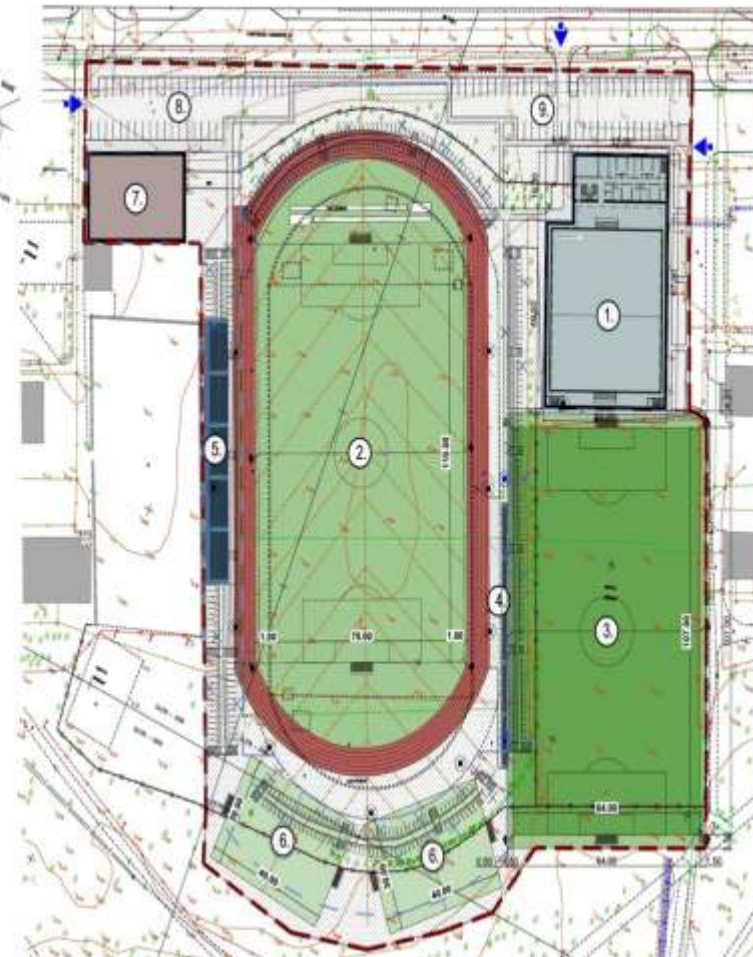
SPORTO AKADEMIJOS, KAIP  
PAMAINOS RENGIMO BAZĖS,  
GALIMYBIŲ STUDIJA  
(PASIŪLYMAI)

## SUTARTINAI ŽYMĖJIMAI

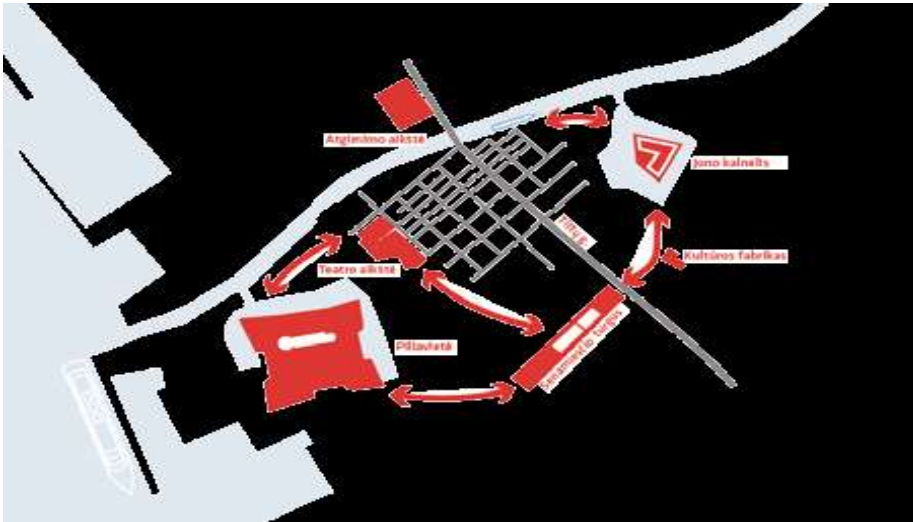
1. FUTBOLŲ MANIEŽAS SU ADMINISTRACINĖMS PATALPOMS
2. STADIONAS
3. REKONSTRUOJAMA DIRBTINĖS DANGOS AKŠTĖ
4. 250 VIETŲ TRIBŪNOS
5. 1000 VIETŲ TRIBŪNOS
6. ATVIKROS SPORTO AKŠTELĖS
7. SUNKIOSIOS ATLETIKOS MANIEŽAS
8. 45 VIETŲ AUTOMOBILIŲ STOVĖJIMO AKŠTELĖ (PAGAL DETALŲ PLANĄ)
9. 50 VIETŲ AUTOMOBILIŲ STOVĖJIMO AKŠTELĖ (PAGAL DETALŲ PLANĄ)

- SKLYPO RIBA PAGAL DETALŲ PLANĄ
- UŽSTATYMO RIBA PAGAL DETALŲ PLANĄ
- ESAMOS UŽSTATYMAS
- ▲ PATEKIMAI / TERITORIJĄ
- RENGIAMŲ ŠVIESTUVŲ
- PERKELIAMŲ ŠVIESTUVŲ
- NUKINAMA TVORA
- NUKINAMOS TRIBŪNOS
- KERTAMI MEDŽIAI
- RENGIAMŲ TVORA
- RENGIAMŲ PĖSČIŲ TAKAI

## TERITORIJOS SPRENDINIAI



# Historical restoration of the old urban structure of the Old Market area



Thank you!!!